

21ST Century Tools For Archivists:

A Progress Report on Persistent Archives at
the Stanford Linear Accelerator Center (SLAC)

Jean Marie Deken
Archivist

Overview

- SLAC Test Collection: SLD Records
- SLAC Metadata development
- PAWN Workflow: SLAC → NARA
- Some conclusions / issues for the future



SLAC Test Collection: SLD

- ❑ **SLAC Large Detector** for the SLAC Linear Collider (SLC) 1983-1988
- ❑ Early and prolific user of world-wide web
- ❑ No further need to keep data confidential
- ❑ Many types of electronic documents
- ❑ Meet US Department of Energy/NARA criteria for retention

SLAC Test Collection: SLD

Initial Electronic Records Appraisal

- Surfed SLD web site – “manual crawl” <http://www-sld.slac.stanford.edu/sldwww/sld-working.html>
- Generated list of records series – technical appraisal <http://www.slac.stanford.edu/history/sldpat.htm>
- Interviewed collaboration's
 - Data Czar
 - Web manager
 - Spokesperson

SLAC Test Collection: SLD

Targeted Web Crawls

- SDSC crawl agent combs site, starting at <http://www-sld.slac.stanford.edu> and <http://www-sldnt.slac.stanford.edu>
- Crawl result reviewed by SLAC
 - Too broad horizontally
 - 1100 pages → 112 urls of interest
 - “No Crawl” messages stopped the agent

SLAC Metadata Development

- Began with the data elements that we currently use for our archives collections database, SLACARC
- Looked at
 - Dublin Core
 - METS
 - NARA metadata scheme

SLAC Metadata Development

□ Now :

- Application and revision
- Some automated application of std. Metadata
- <http://www.slac.stanford.edu/history/projects/MetadataScheme8.html>

□ Future:

- Automate application of std. metadata
- Automate extraction of metadata

Metadata Scheme for SLAC PAT Project SLD records v. 8

Attribute	Value (samples for this project provided here)	Attribute Type (variable or fixed)	Attribute Level (series/accession or item level)	Injection/Extraction Method?	Proposed Injection/Extraction Technique/Tool
INJECTED METADATA:					
slac.gov.recordgroup	434	variable	series/accession	automatically add to all records	??
slac.gov.agency	USDOE	variable	series/accession	automatically add to all records	??
slac.gov.referenceby	SAHO (SLAC), 2575 Sand Hill Road MS82, Menlo Park CA 94025. PH: 650-926-3091 FX 650-926-5371, EMAIL slacarc@slac.stanford.edu	fixed	series/accession	automatically add to all records	??
slac.gov.schedule	use the records series descriptions and schedule citations on list at http://www.slac.stanford.edu/history/projects/sldpat.htm	variable	series/accession	archivist add to selected records	
slac.gov.series		variable	series/accession	Wording from applicable schedule item.	NARA tool? Extract from online version of NARA schedule?
slac.gov.description		variable	series/accession	Wording from applicable schedule item.	NARA tool? Extract from online version of NARA schedule?
slac.gov.retention		variable	series/accession	Automatic, calculated based on applicable NARA/DOE schedule item	NARA tool?
slac.creator.organization	Stanford Linear Accelerator Center	fixed	series/accession	automatically add to all records, always	??
slac.creator.division	RD	variable	series/accession	automatically add to selected records (all records for SLC project)	??
slac.creator.group	SLD	variable	series/accession	automatically add to selected records (all records for SLC project)	??
slac.description.type	Series	variable	series/accession	automatically add to selected records	??
slac.description.by	[lname, Fname]	variable	series/accession	automatically add to all records processed/ingested at a given time by a given person. Repeatable?	??
slac.description.date		variable	series/accession	automatically add to all records processed/ingested at a given time by a given person	??
slac.description.remarks	[will vary, will not always be needed]	variable	series/accession	manually add to some records	can this be done with an Scommand? (which one(s)?)
slac.identifier.copy	Preservation	variable	series/accession	automatically add to all records	??
slac.identifier.contmgt		variable	series/accession	manually add to some records, where appropriate	
slac.identifier.websitename	ex.: Introduction to the SLD Collaboration	variable	series/accession	automatically add to all records	
slac.capture.tool	SDSC tool; HTTrack; etc.	variable	series/accession	manually add to crawled records	
slac.capture.settings		variable	series/accession	manually add to crawled records	
slac.capture.sitemap		variable	series/accession	manually add to crawled records	

Mozilla Firefox

File Edit View History Bookmarks Tools Help

http://www.slac.stanford.edu/history/projects/MetadataSchema.html

Customize Links Free Hotmail RealPlayer Windows Marketplace Windows Media Windows

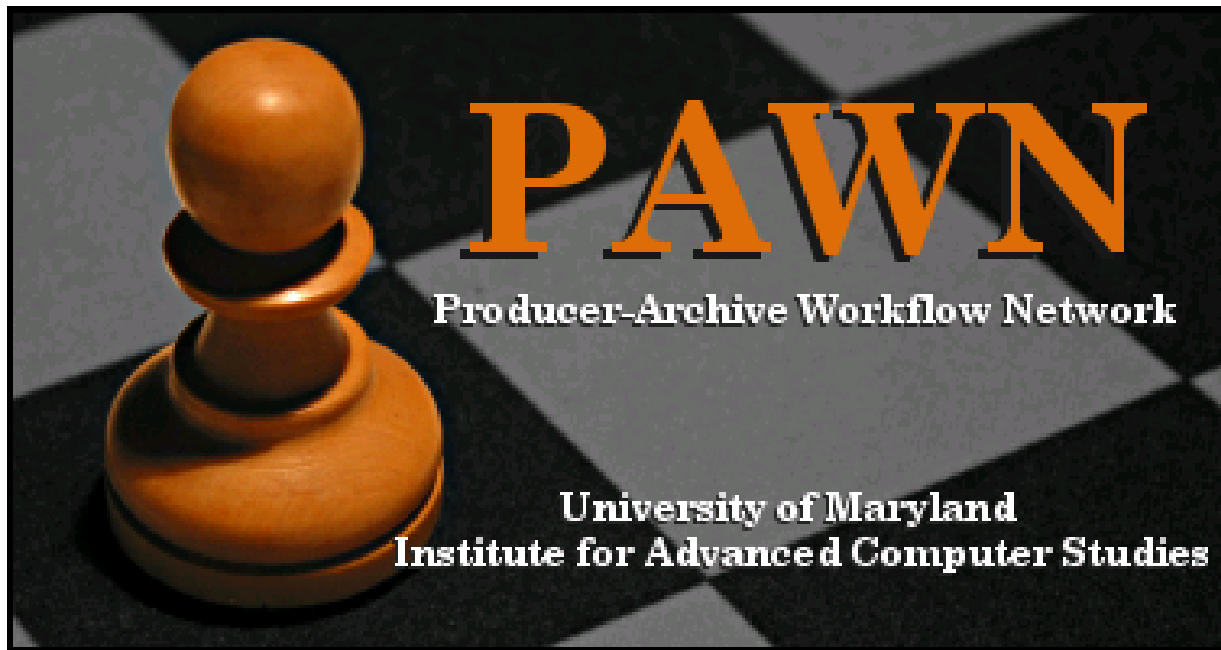
santa clara county archives

Attribute	Value	Attribute Type	Attribute Level	Injection/Extraction Method?	Injection/Extraction Technique/Tool ?
EXTRACTED METADATA:					
slac.gov_access		variable	series/accession	3 choices: Open, Restricted, Restricted until	create tool that assigns status based on records schedule item?
slac.creator.person	Lname, Fname	variable	series/accession	Extract from page (s)? Repeatable attribute?	GaTech tool? OR if an image embedded in html, use the creator for the html
slac.creator.owner	Lname, Fname	variable	series/accession	Extract from page(s)? Repeatable attribute?	GaTech tool?
slac.description.local		variable	series/accession	extract from page: page title, <h#> tags?	GaTech tool?
slac.description.use		variable	series/accession	yes or no	create tool that assigns status based on "access" entry?
slac.description.webplatform		variable	series/accession		
slac.description.webserver			series/accession		
slac.description.format		variable	item	information available from system	To see, use Scocommand: SgetD [filename.extension] Result is labeled: data_typ_name
slac.description.filesize		variable	item	information available from system	To see, use Scocommand: SgetD [filename.extension] Result is labeled: data_size
slac.date.begun		variable	series/accession	Extract from page: look for earliest date?	GaTech tool?
slac.date.modified		variable	series/accession	Extract from page(s): look for latest date?	GaTech tool?
slac.identifier.url	original URL of the record/ resource	variable	item	automatically extract from the output.txt file created during the web crawl	SLAC can do this
slac.identifier.filename		variable	item	information available from system	To see, use Scocommand: SgetD [filename.extension] Result is labeled: data_name
slac.identifier.storage.location		variable	item	information available from system	To see, use Scocommand: SgetD [filename.extension] Result is labeled: path_name
slac.identifier.persistent		variable	item	Unique name for the resource	

Last update: 25-Apr-2007
Page owner: J. M. Deken

PAWN WORKFLOW:

SLAC → NARA




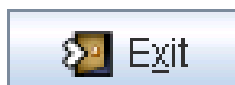
Version 0.5.2 (2006-05-12)

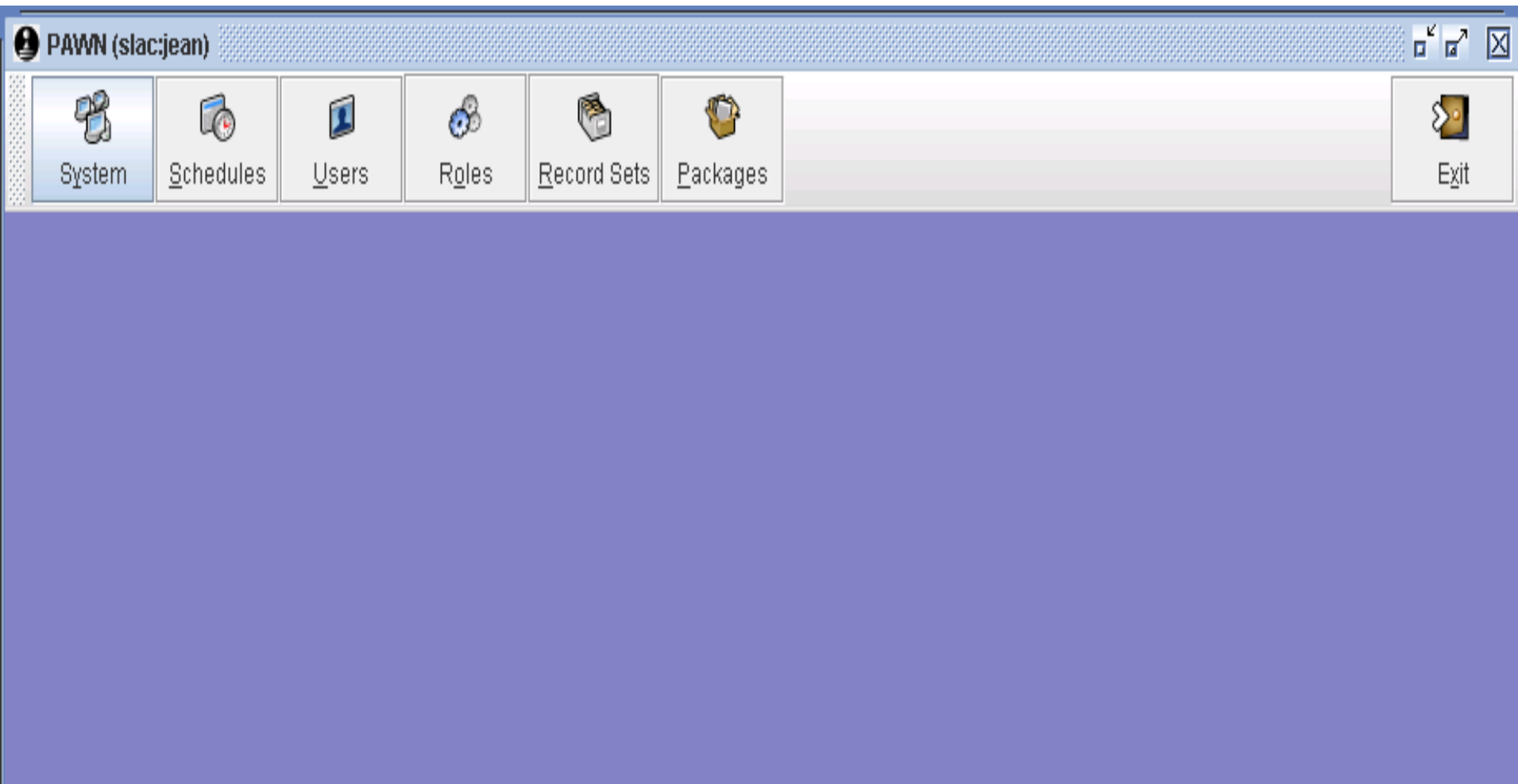
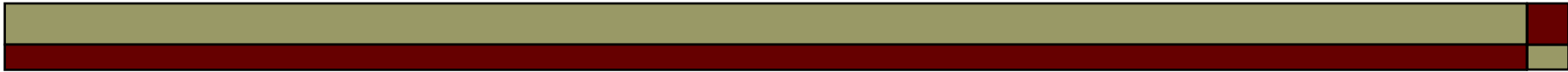
Hostname:

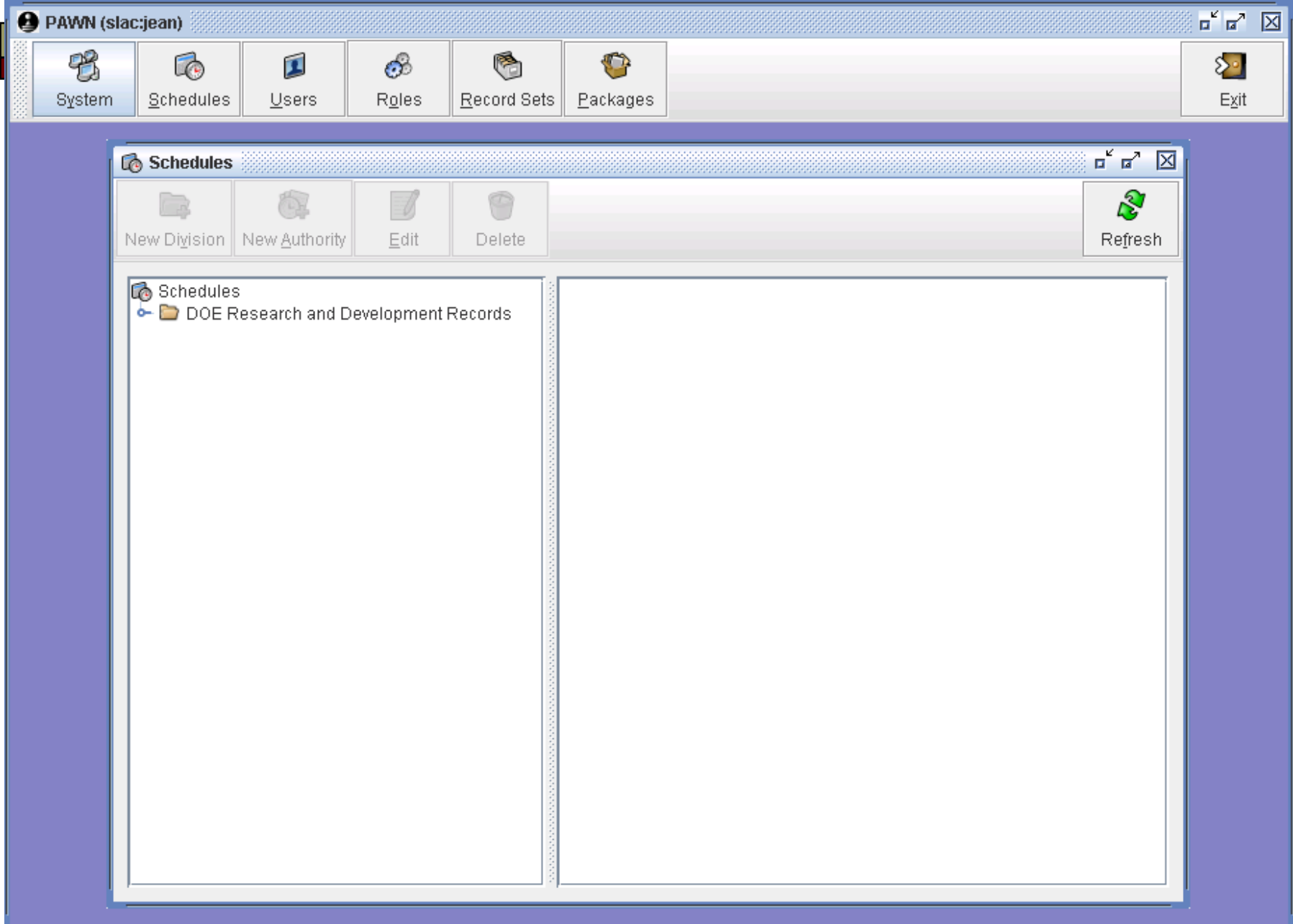
Username:

Password:

Keystore File: 







PAWN (slac:jean)

System Schedules Users Roles Record Sets Packages Exit

Schedules

New Division New Authority Edit Delete Refresh

Schedules

- DOE Research and Development Records
 - Research and Development Project Records
 - Research and Development Program Management Records
 - Medical Research Records (3)

Department of Energy Record Schedule for Research and Development Records

08-25-03

PAWN (slac:jean)

System Schedules Users Roles Record Sets Packages Exit

New Division New Authority Edit Delete Refresh

Schedules

- DOE Research and Development Records
 - Research and Development Project Records
 - R&D Project Case Files (1.A)
 - R&D Record Series (1.B)
 - Research and Development Program Management
 - Medical Research Records (3)

1. RESEARCH & DEVELOPMENT PROJECT RECORDS
 R&D project records may be maintained as: a) a project case file or b) individual record series. The project case file approach provides a complete record of an R&D project from start to finish, allowing the reconstruction of relevant procedures and analyses. The second method for organizing and maintaining R&D project records is by individual record series.

The criteria for scheduling records into one of the following three levels, unless otherwise indicated in the schedule, is as follows:

Level I: Projects which received national or international awards of distinction; active participation of nationally or internationally prominent investigators; research which resulted in a significant improvement in public health, safety, or other vital national interests; scientific endeavors which were the subject of widespread national or international media attention and/or extensive Congressional, DOE or other government agency investigation; show the development of new and nationally or internationally significant techniques which are critical for future scientific endeavors; or made a significant impact on the development of national or international scientific, political, economic, or social priorities.

Level I Disposition Instructions : Permanent. Cutoff after project/program completion, cancellation, or termination, or in 5 year blocks. Retire to FRC 2 years after termination of project/program. Transfer to NARA 30 years after termination of project/program. (N1-434-96-9)

PAWN (slac:jean)

System Schedules Users Roles Record Sets Packages Exit

New Division New Authority Edit Delete Refresh

Schedules

- DOE Research and Development Records
 - Research and Development Project Records
 - R&D Project Case Files (1.A)
 - R&D Record Series (1.B)
 - Research and Development Program Management
 - Medical Research Records (3)

agency investigation; show the development of new and nationally or internationally significant techniques which are critical for future scientific endeavors; or made a significant impact on the development of national or international scientific, political, economic, or social priorities.

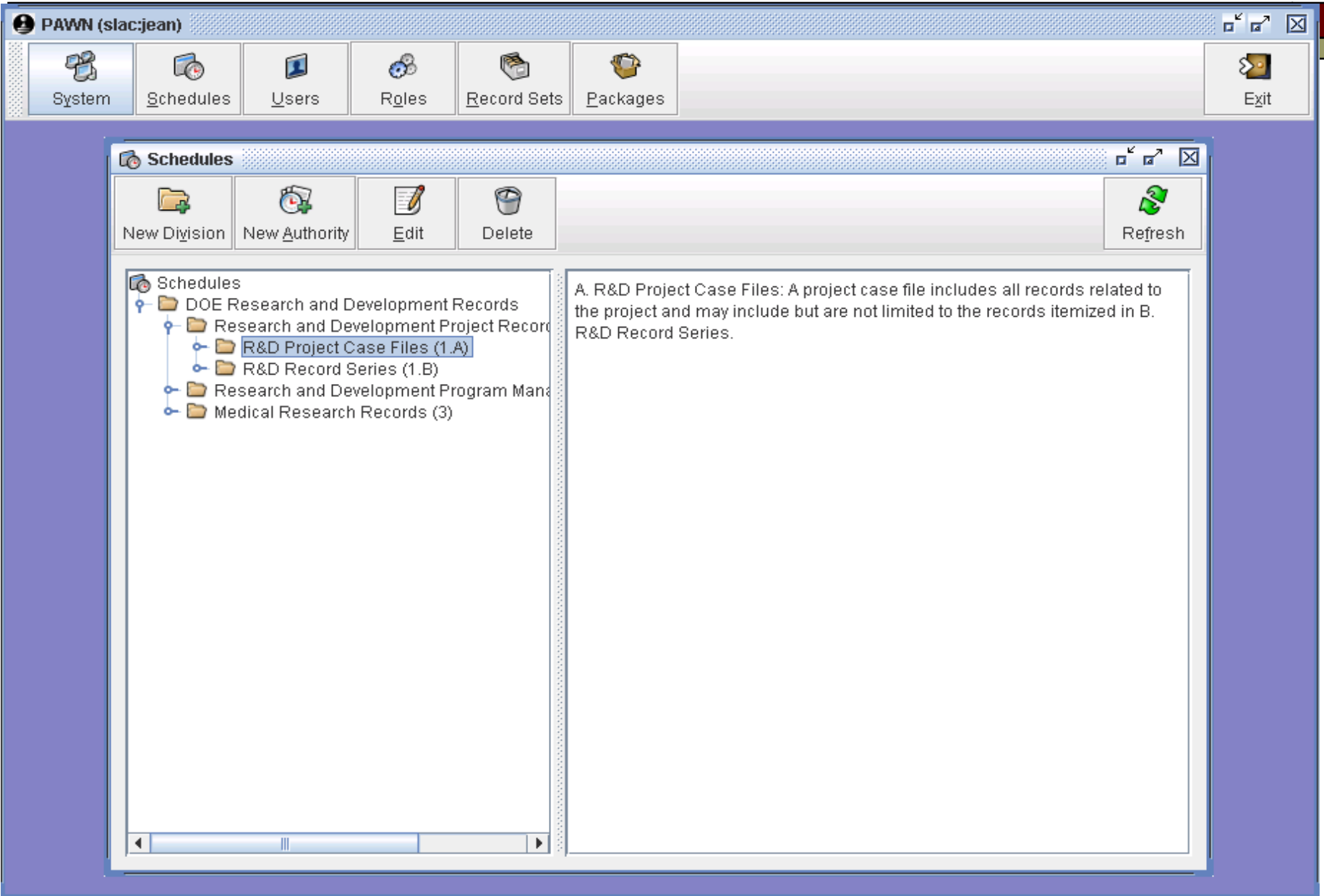
Level I Disposition Instructions : Permanent. Cutoff after project/program completion, cancellation, or termination, or in 5 year blocks. Retire to FRC 2 years after termination of project/program. Transfer to NARA 30 years after termination of project/program. (N1-434-96-9)

Level II: Research that leads to the development of a "first of its kind" process or product; improved an existing process, product, or application, or has implications for future research.

Level II Disposition Instructions : Cutoff files after project/program completion, cancellation or termination, or in 5 year blocks. Retire to FRC 2 years after termination of project/program. Destroy 25 years after termination of project/program. (N1-434-96-9)

Level III: Research projects/programs that do not fall into Level I or II.

Level III Disposition Instructions : Cutoff files after project/program completion, cancellation or termination, or in 5 year blocks. Retire to FRC 2 years after termination of project/program. Destroy 10 years after termination of project/program. (N1-434-96-9)



Record Sets [Refresh]

[Add Set] [Edit Set] [Delete Set] [Edit Group]

Stanford Linear Accelerator Center
- SCCS
- SLD

Record Sets:

User Group:

User	Name
------	------

PAWN (slac:jean)

System Schedules Users Roles Record Sets Packages Exit

Record Sets Refresh

Add Set Edit Set Delete Set Edit Group

Stanford Linear Accelerator Center

- SCCS
- SLD

Record Sets:

SLD Experiment Case File

User Group:

User	Name
slac:jean	Jean Deken
slac:manager	SLAC Records Officer
slac:wilko	Wilko Kroeger

Schedules

PAWN (slac:jean)

System Schedules Users Roles Record Sets Packages Exit

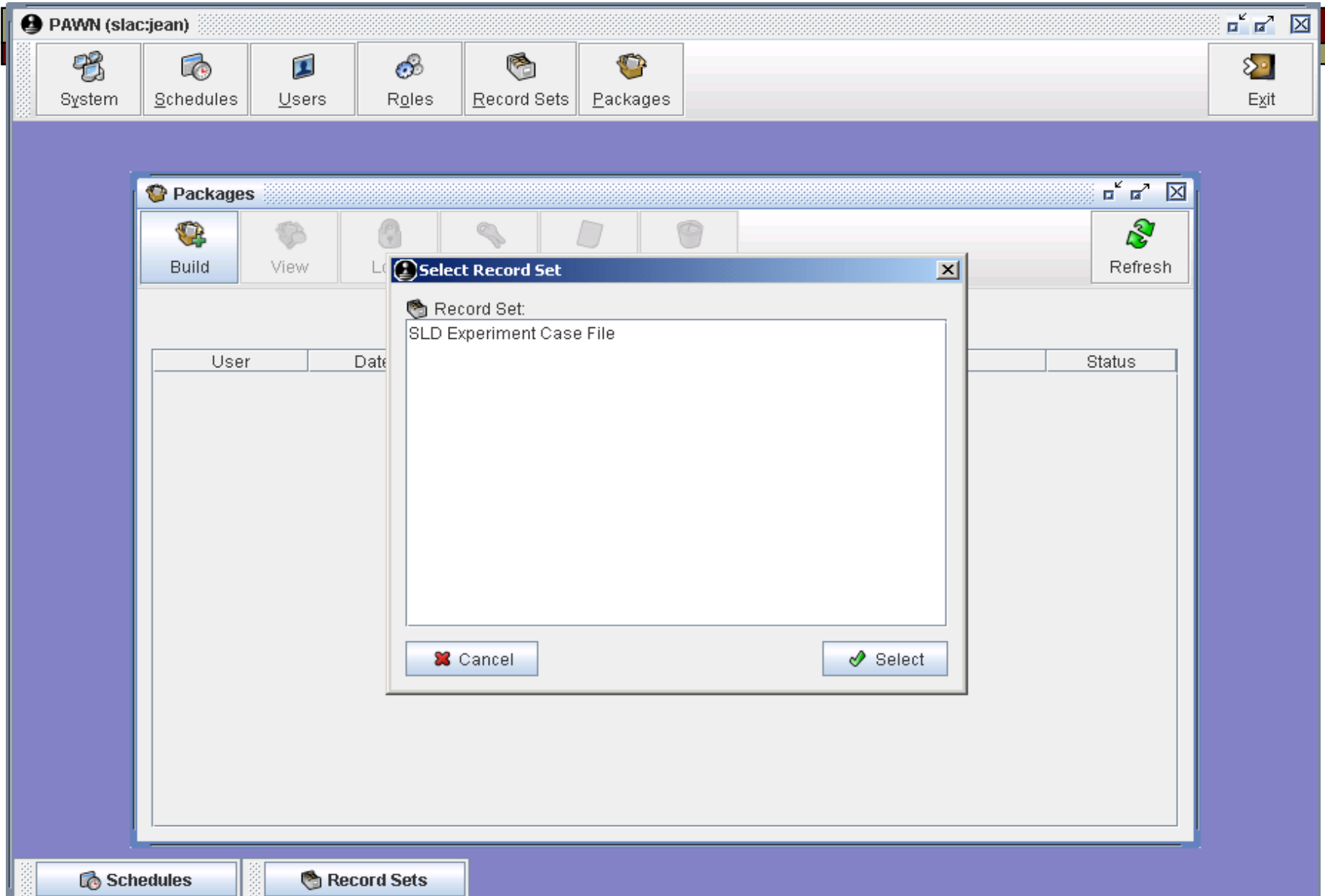
Packages

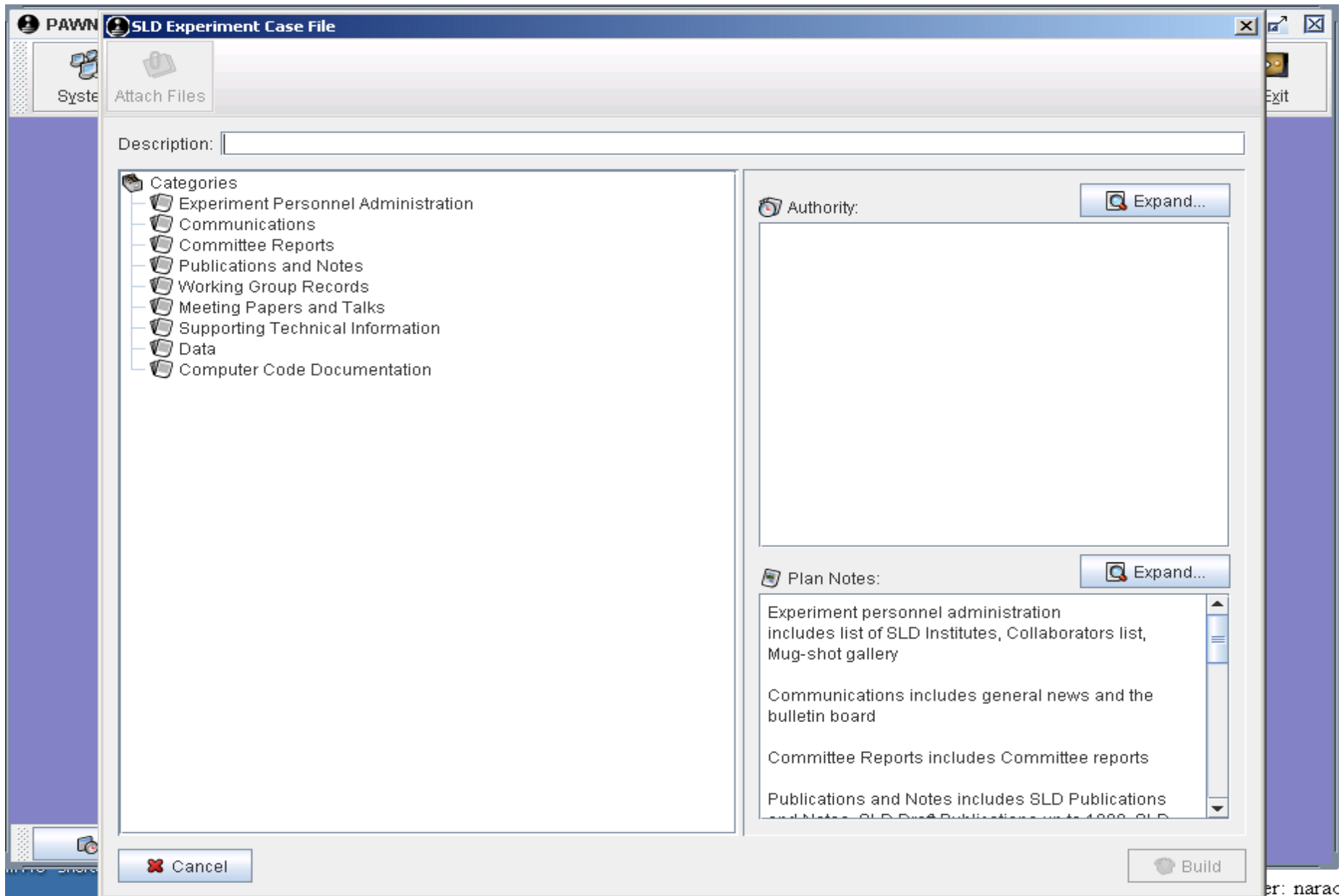
Build View Lock UnLock Event Log Remove Refresh

Filter Packages: Received Locked Removed

User	Date	Record Set	Description	Status

Schedules Record Sets





PAWN SLD Experiment Case File

System Attach Files

Description: SLC Committee Reports from SLD Website: Shift Policy

- Categories
 - Experiment Personnel Administration
 - Communications
 - Committee Reports**
 - Publications and Notes
 - Working Group Records
 - Meeting Papers and Talks
 - Supporting Technical Information
 - Data
 - Computer Code Documentation

Authority: Expand...

1. Level I (see criteria at 1. above). Permanent. Cutoff after project/program completion, cancellation, or termination, or in 5 year blocks. Retire to FRC 2 years after termination of project/program. Transfer to NARA 30 years after termination of project/program. (N1-434-96-9.1A1)

Plan Notes: Expand...

Experiment personnel administration includes list of SLD Institutes, Collaborators list, Mug-shot gallery

Communications includes general news and the bulletin board

Committee Reports includes Committee reports

Publications and Notes includes SLD Publications and Notes, SLD Press Publications up to 1999, SLD

Cancel Build

SLD Experiment Case File

Attach Files

Description: SLC Committee Reports from SLD Website: Shift Policy

Categories

- Experiment Personnel Administration
- Co
- Co
- Pu
- Wc
- Me
- Su
- Da
- Co

Authority: Expand...

Create package: Committee Reports

Package Contents

- Level I R&D Project Case Files

Attached Metadata

Expand...

stiff

ears

ARA 30

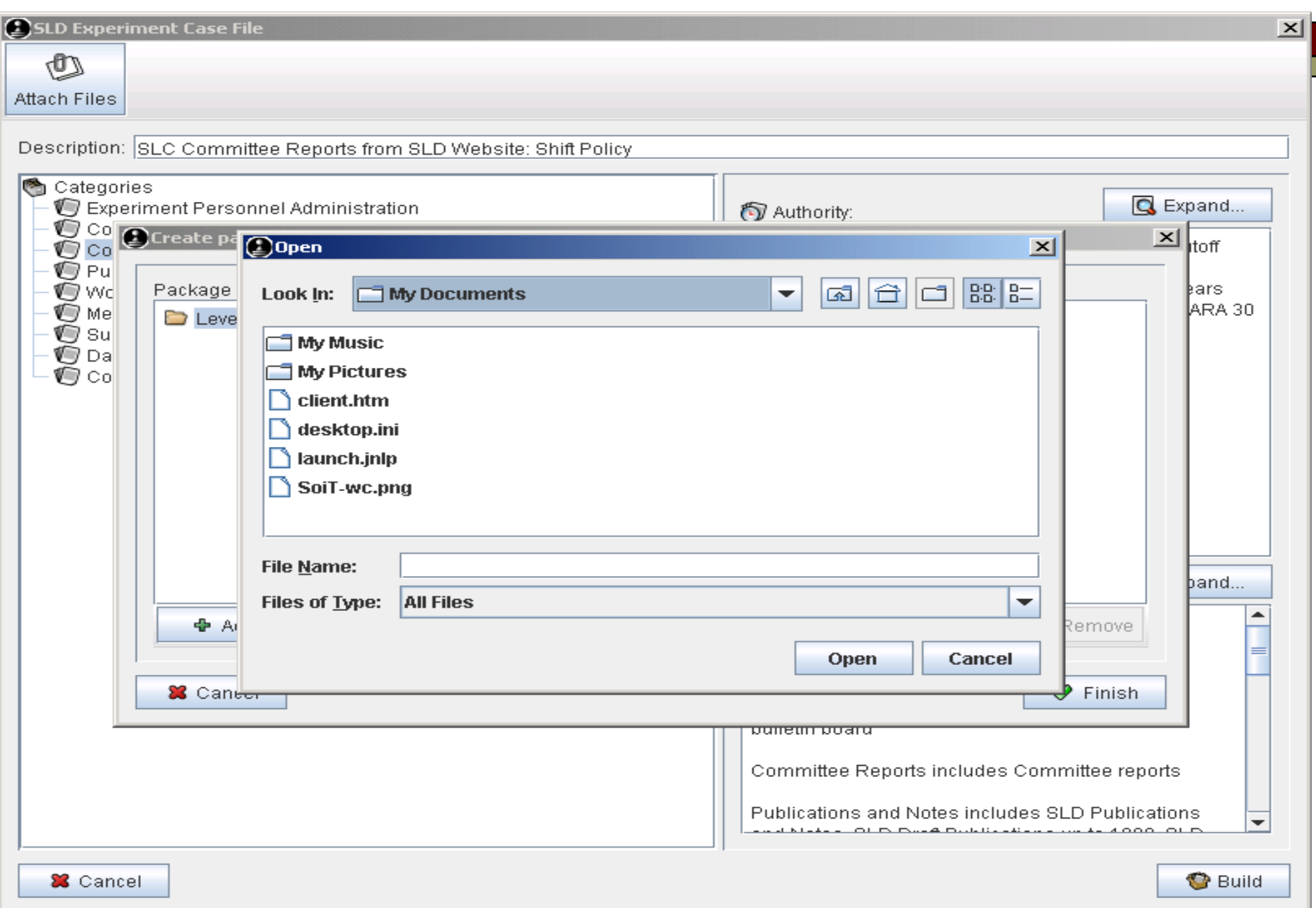
band...

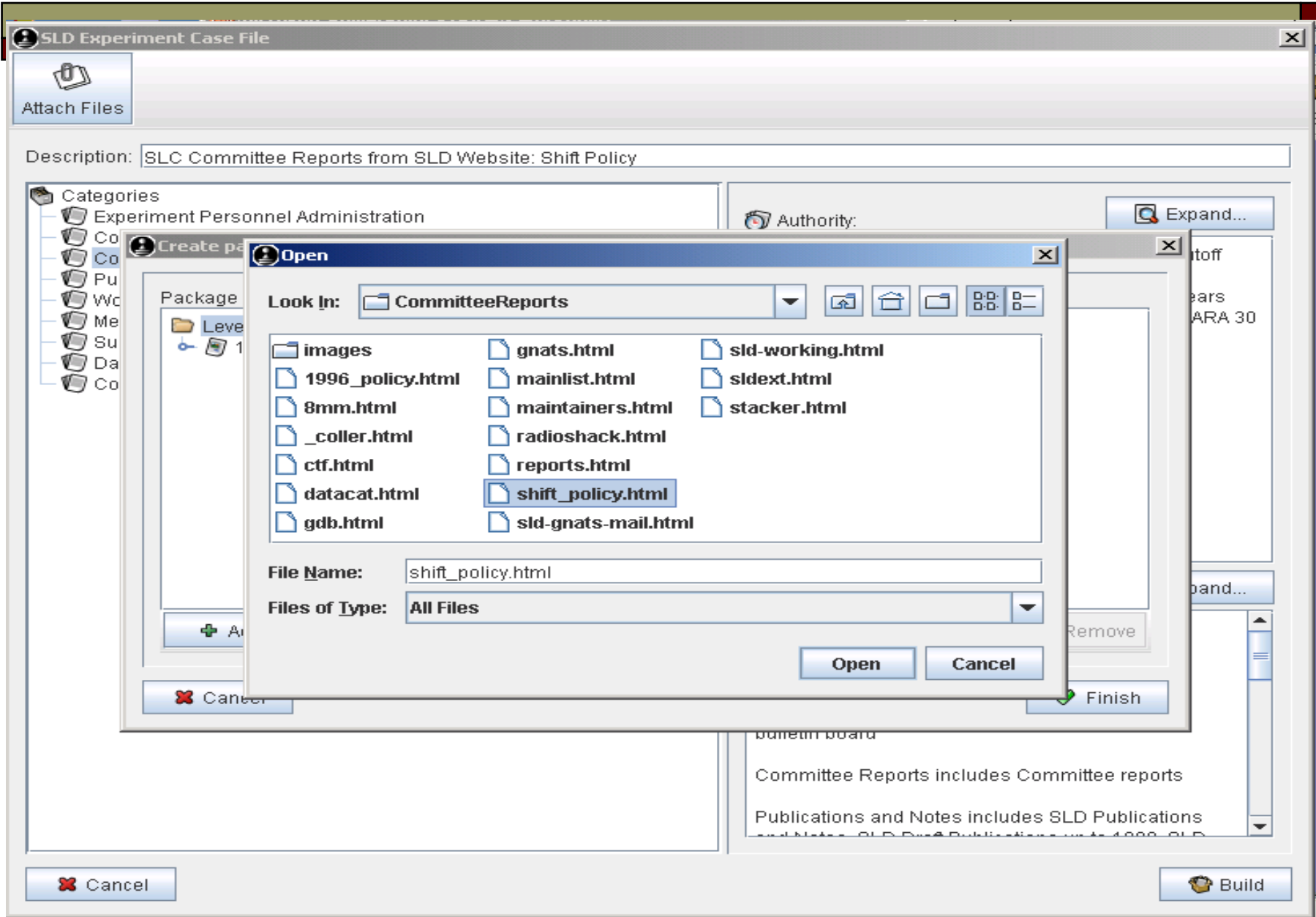
bulletin board

Committee Reports includes Committee reports

Publications and Notes includes SLD Publications and Notes, SLD Pub&Publications up to 1999, SLD

Cancel Add New Folder Remove Attach Remove Cancel Finish Build





SLD Experiment Case File

Attach Files

Description: SLC Committee Reports from SLD Website: Shift Policy

Categories

- Experiment Personnel Administration
- Co
- Co
- Pu
- Wc
- Me
- Su
- Da
- Co

Authority: Expand...

Create package: Committee Reports

Package Contents

- Level I R&D Project Case Files
 - 1996_policy.html
 - shift_policy.html

Attached Metadata

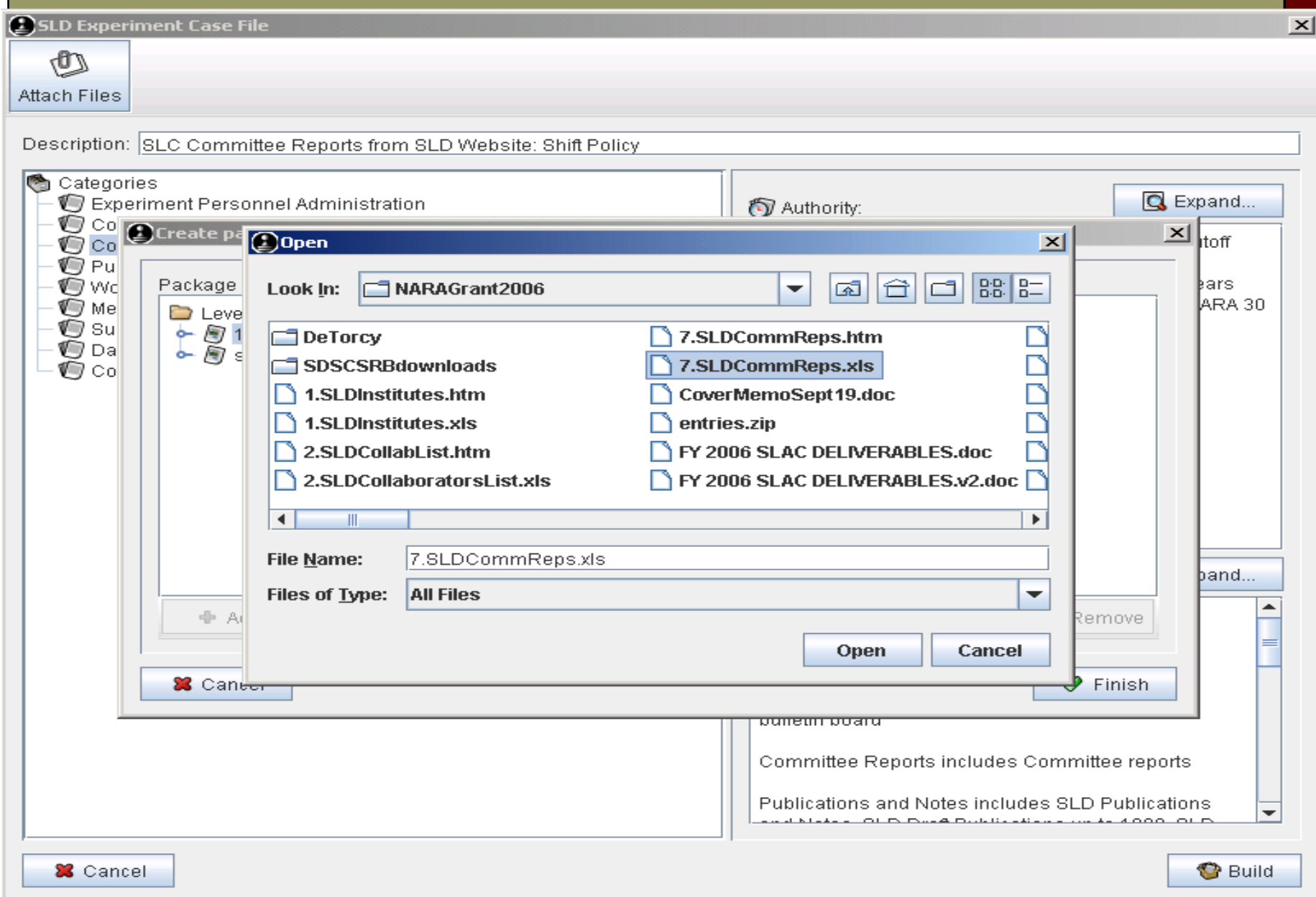
Attach Remove

Cancel Finish

Committee Reports includes Committee reports

Publications and Notes includes SLD Publications

Cancel Build



SLD Experiment Case File

Attach Files

Description: SLC Committee Reports from SLD Website: Shift Policy

Categories

- Experiment Personnel Administration
- Co
- Co
- Pu
- Wc
- Me
- Su
- Da
- Co

Authority: Expand...

Create package: Committee Reports

Package Contents

- Level I R&D Project Case Files
 - 1996_policy.html
 - shift_policy.html

Attached Metadata

7.SLDCommReps.xls

Buttons: Add, New Folder, Remove, Attach, Remove, Cancel, Finish

Committee Reports includes Committee reports

Publications and Notes includes SLD Publications

Buttons: Cancel, Build

PAWN (slac:jean)


System Schedules Users Roles Record Sets Packages Exit

Build View Lock UnLock Event Log Remove Refresh

Filter Packages: Received Locked Removed

User	Date	Record Set	Description	Status
------	------	------------	-------------	--------

Information [X]

 Submission complete

Continue

Schedules Record Sets

PAWN (slac:jean)

System Schedules Users Roles Record Sets Packages Exit

Packages

Build View Lock UnLock Event Log Remove Refresh

Filter Packages: Received Locked Removed

User	Date	Record Set	Description	Status
slac:jean	2006-07-19	SLD Experiment Case File	SLC Committee Reports from ...	Received



System



Schedules



Users



Roles



Record Sets



Packages



Exit

Package: SLC Committee Reports from SLD Website: Shift Policy



Download



Category...



Validate



Modify



Archive



Reject



Accept



Refresh

Category: Level I R&D Project Case Files

Level I R&D Project Case Files

Files

Name	Type	Size
1996_policy.html	text/html	11357
shift_policy.html	text/html	17434

Metadata

Name	Type
------	------

System Schedules Users Roles Record Sets Packages

Exit

Packages

Build

Refresh

Package: SLC Committee Reports from SLD Website: Shift Policy

Download Category... Validate Modify Archive Reject Accept Refresh

Category: Level I R&D Project Case Files

- Level I R&D Project Case Files
 - 1996_policy.html
 - shift_policy.html

Files		
Name	Type	Size
1996_policy.html	text/html	11357
shift_policy.html	text/html	17434

Metadata	
Name	Type
7.SLDCommReps.xls	application/vnd.ms-excel

Status
Received
Received

Conclusions / Future issues ...

- Metadata
 - What
 - Where
 - How
- Generalize lessons to other collections
 - GLAST project (NASA records schedule)
 - Non-science archival collections
 - First US Web site
 - Public Affairs photographs

For further information....

- TPAP at SLAC:

- <http://www.slac.stanford.edu/history/projects.shtml>

- PAWN:

- <http://www.umiacs.umd.edu/research/adapt>

- Or “I’m feeling lucky” Google keywords:
ADAPT UMIACS *

*A Digital Approach to Preservation Technology,
University of Maryland Institute for Advanced Computer Studies



Contact information....

Jean Marie Deken

Archivist and Head

Archives and History Office

Stanford Linear Accelerator Center

jmdeken@slac.stanford.edu